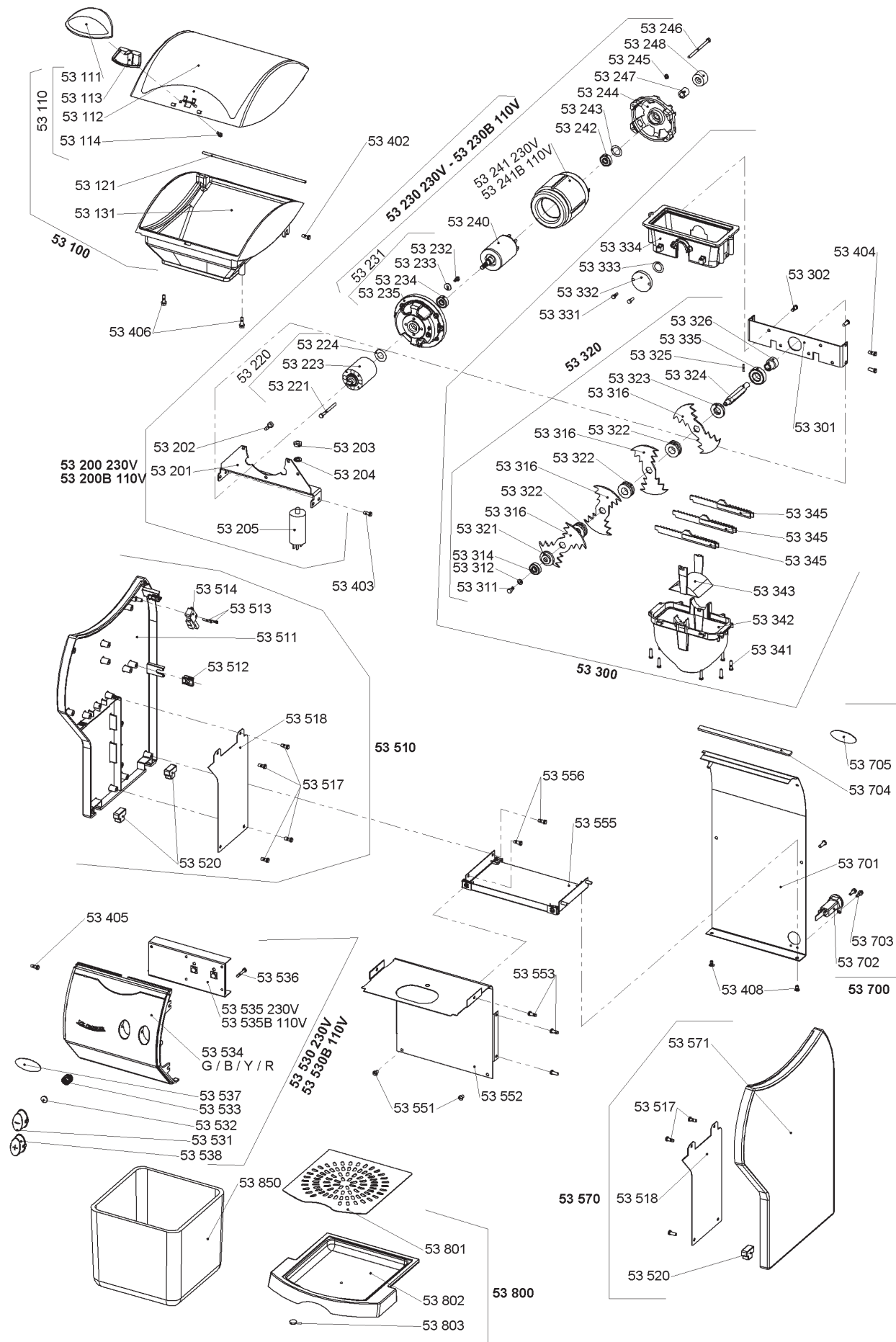




www.santos.fr



## Ice crusher # 53



## Ice Crusher # 53

This commercial appliance crushes all ice cubes from any ice machine

Fine or coarse crushed ice for cocktail bars, restaurants, night clubs...

Use the standard International ice bucket to make your service easier



N° 53 Gris







www.santos.fr

# Ice crusher # 53

## Powerful / Efficient / Reliable

Heavy duty, high output, commercial ice crusher

Makes both fine and coarse crushed ice in just one touch of a button.

Simply and quickly makes 1.2kg (2.7 pounds) of crushed ice in 30 seconds.

Ideal for frozen margaritas or daiquiris and to serve food on a bed of ice.

Electronic control unit with 2 operating systems (manual or automatic timer)



## Easy to use



For the standard ice bucket into the tank.

Put the ice bucket in the under position.

Push button to make fine or coarse crushed ice.



## Technical specifications

### Motor

Single phase 220-240V - 50/60 Hz - 130 W  
100-120V - 50/60 Hz - 155 W

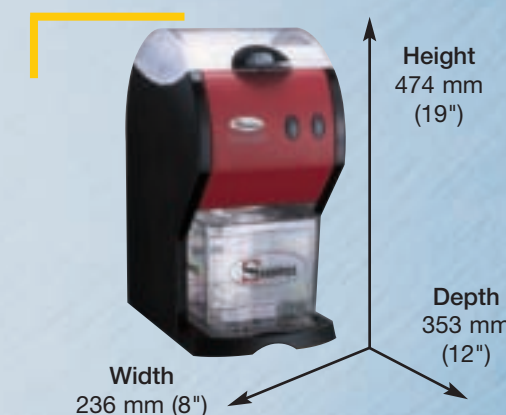
Speed 73 rpm (50 Hz)  
89 rpm (60 Hz)

### Weight

Net 10 Kg (22 lbs)  
Packed 11 Kg (24 lbs)

### Dimensions

	Appliance	Packed (Box)
Height	474 mm (19")	520 mm (20,5")
Width	236 mm (8")	375 mm (14,7")
Depth	353 mm (12")	415 mm (16,3")
Shipping cube		0,080 m <sup>3</sup> (2,7 ft <sup>3</sup> )



## Safety - Standards - Hygiene

This appliance has been designed to comply with the most strict international safety and hygiene regulations in conformity with the standards, especially :

- ♦ Machinery directive 98/37/EC or 2006/42/EC
- ♦ Electromagnetic compatibility 2004/108/EC
- ♦ RoHS directive 2002/95/EC

- ♦ Harmonized European standards  
EN ISO 2100-1 and 2 : 2004 EN 60204-1 : 2006
- ♦ CE European standards

### Electrical safety

Waterproof ECU (electronic control unit). Overload safety  
All mechanical parts are ground (earth) connected  
every equipment is perfectly controlled after assembly  
(special electrical testing bay)

### Thermal safety

Motor protected by internal thermal detector.

### Acoustic safety

The asynchronous motor is particularly silent

### Hygiene

All removable parts can be put in a dishwasher or easily cleaned with hot soapy water.

Technical characteristics can be modified by the manufacturer without notice.