

**/// BRAVILOR  
BONAMAT**



■ **Mondo**-series

■ **Matic**-series

■ **TH**-series



## Quick filter

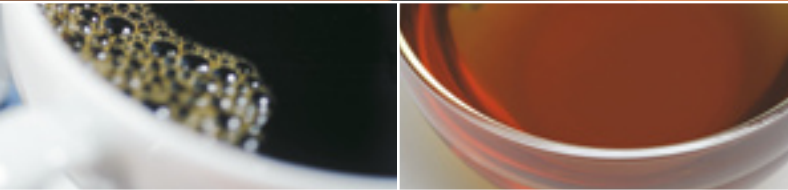
Delicious fresh filter coffee



The taste of quality worldwide



See  
Smell  
Taste



Fresh filter coffee, brewed of course, by the quick filtering machines of Bravilor Bonamat! The range of machines enables you to serve delicious fresh coffee, quickly and simply in any location. The high-quality stainless steel in combination with black accents provide a contemporary design. LED controlled operation, stainless steel filter pan and integral hot plates make our machines easy to use. Operation and maintenance require little time. Signals indicate when the coffee is ready and when the machine should be descaled.



◀ The Mondo-series and TH can be filled with water from the front of the machine. Convenient and safe!



## ■ Mondo-series

### Mondo 2



- Features a manual fill water system allowing the machine to be placed anywhere
- A signal indicates whether the machine is filled with water
- Two self-regulating hot plates ensure an optimum coffee quality

### Mondo Twin



- Quickly brews large quantities of coffee thanks to the double brewing system
- Features a manual fill water system allowing the machine to be placed anywhere
- A signal indicates whether the machine is filled with water
- Four self-regulating hot plates ensure an optimum coffee quality



◀ Self-regulating hot plates. Both hot plates of the HP can be switched on or off independently.



## ■ Matic-series

## ■ TH-series

### Matic 2



- Automatic water fill model with quick and easy connection to the water mains supply
- Coffee of consistent quality by accurate water dosing
- Two self-regulating hot plates ensure an optimum coffee quality

### TH



- Features a manual fill water system allowing the machine to be placed anywhere
- A signal indicates whether the machine is filled with water
- Brews coffee directly into airpot or vacuum container

### Matic Twin



- Quickly brews large quantities of coffee thanks to the double brewing system
- Automatic water fill model with quick and easy connection to the water mains supply
- Coffee of consistent quality by accurate water dosing
- Four self-regulating hot plates ensure an optimum coffee quality

### THa



- Automatic water fill model with quick and easy connection to the water mains supply
- Coffee of consistent quality by accurate water dosing
- Brews coffee directly into airpot or vacuum container



◀ The airpot Furento and the Advanta vacuum container are specifically designed to preserve an optimal coffee quality for long periods of time.



◀ Multi-usable Airpot station. A base for two airpots, accessories and ingredients. Ideal for a functional and attractive presentation.

## Options Mondo, Matic & TH series

- Stainless steel filter pan for brewing tea
- HP: self-regulating hot plates
- Console for wall mounting (Mondo/Matic)
- Models designed specifically for marine use (Mondo/Matic) are available
- Cup warmer WHK preheats cups and mugs
- Water filter to ensure an optimal water quality

## We advise the use of:

- Bravilor Bonamat filter papers
- Renegite for descaling
- Cleaner for thorough cleaning

## Additional options TH series

- Airpot Furento or Advanta vacuum container
- Multi-usable Airpot station for two airpots, accessories and ingredients
- Airpot drip tray: to keep the work surface clean

	Mondo 2	Mondo Twin	Matic 2	Matic Twin
Holding capacity	2 decanters (24 cups)	4 decanters (48 cups)	2 decanters (24 cups)	4 decanters (48 cups)
Throughput per hour 230V	approx. 18 litres (144 cups)	approx. 28 litres (224 cups)	approx. 15 litres (120 cups)	approx. 24 litres (192 cups)
Throughput per hour 400V	-	approx. 36 litres (288 cups)	-	approx. 30 litres (240 cups)
Brewing time 230V	approx. 5 minutes / 1 decanter	approx. 6 minutes / 2 decanters	approx. 6 minutes / 1 decanter	approx. 7 minutes / 2 decanters
Brewing time 400V	-	approx. 5 minutes / 2 decanters	-	approx. 6 minutes / 2 decanters
Rated power 230V~ 50/60Hz	2140W	3460W	2140W	3460W
Rated power 400V~ 3N 50/60Hz	-	4280W	-	4280W
Dimensions (wxdxh)	195x406x446 mm	404x406x446 mm	195x406x446 mm	404x406x446 mm

1 cup = 0.125 litres, 1 decanter = 1.7 litres

	TH	THa
Holding capacity	2.2 litres	2.2 litres
Throughput per hour	approx. 19 litres (152 cups)	approx. 18 litres (144 cups)
Brewing time	approx. 7 minutes / 2.2 litres	approx. 8 minutes / 2.2 litres
Rated power 230V~ 50/60Hz	2310W	2310W
Dimensions (wxdxh)	235x406x545 mm	235x406x545 mm

1 litre = 8 cups

Your Bravilor Bonamat dealer

Jurang Wholesale Limited  
Premier House  
Manchester Road  
Mossley  
OL5 9AA

[www.jurang.co.uk](http://www.jurang.co.uk) - 01457 833672 - [info@jurang.co.uk](mailto:info@jurang.co.uk)

**BRAVILOR  
BONAMAT**

[www.bravilor.com](http://www.bravilor.com)